

# MONDAY MORNING NEWSLETTER

## Expand Your DEIA Knowledge at #ANC22



Sessions include:

- Six Ways to Know If You Are Culturally and Linguistically Responsive
- Dare To Be Distinct: Reimagine Inclusive Conversations
- Creating Culturally Diverse Menus for Your Community

**ANC 2022**  
ANNUAL NATIONAL  
CONFERENCE  
JULY 10-12, 2022 ORLANDO, FL

POWERED BY  
*Imagination*



## Powered By Imagination

ANC hosts the largest and most thrilling Exhibit Hall in the K-12 school foodservice market! Mark your calendars for July 10-12, 2022, to join your peers in Orlando, Fla., for the largest, most exciting school nutrition event of the year!



[Register now!](#)

## Mealtime Memo

June's Mealtime Memo helps you and your students get your green thumbs! Farm to ECE connects children with local, fresh, and healthy foods while teaching them where the food comes from.

Read more [HERE!](#)



## Diversity, Equity, Inclusion, & Access

Your opinion matters! Take the survey to help SNA better understand your experiences related to diversity, equity and inclusion in SNA. Voice your opinion [HERE!](#)



## Mooove into summer

June is your opportunity to put dairy in the spotlight! celebrate a food group that plays an essential role in healthy school meals. In "Milking It for All It's Worth," a new [SN Plus article](#), you'll discover why cows can't travel down stairs, why milk is a good antidote to hot and spicy foods and why calcium is important to healthy growth—plus 27 more fascinating facts, one for each day of National Dairy Month.



## 2022 Snapa Annual Conference



There's still time to register for the 2022 SNAPA Annual Conference, July 25-28, 2022! We want to see you at the Spooky Nook Sports Complex & Warehouse Hotel in Manheim, PA! We have a wonderful line up of speakers and professional development opportunities that you won't want to miss!

Food Show to be held on Wednesday, July 27, 2022.  
[Learn more and register here!](#)

## Thank You Partners!

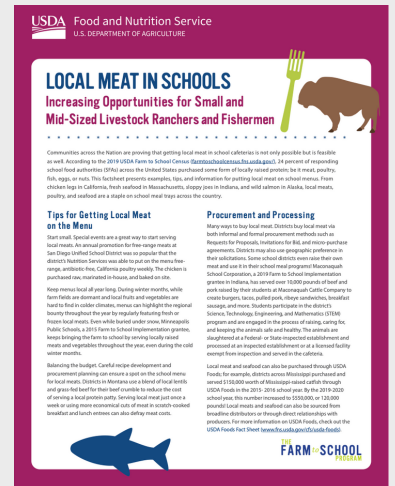


AMERICAN DAIRY ASSOCIATION NORTH EAST



## Farm to School Program

The Farm to School Program is here to give you all the facts! Are you wanting to put local meats on your menu? Check out [this fact sheet](#) to help you make your decision! If you're looking for more topics, check out other sheets [here!](#)



## In The News

[For Millions of Students, a School Lunch Crisis Might Be Impending](#)

[Waivers Update! Remarks from the Senate Agriculture Committee Chair](#)

[USDA Announces Framework for Shoring Up the Food Supply Chain and Transforming the Food System to Be Fairer, More Competitive, More Resilient](#)

[Some States Want to Lock in Universal Free School Meals as Federal Waivers End](#)

[Ending Hunger, Improving Nutrition and Physical Activity, and Reducing Diet-Related Diseases and Disparities](#)