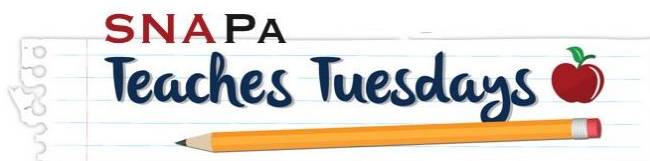


MONDAY MORNING

NOVEMBER 30, 2020



**Don't forget to register for the upcoming
webinar on December 8th!**



PROJECT PA
HARVEST OF THE MONTH PART 1

Register to zoom with us here!

Missed out on all of the fun? All past webinars are recorded just for you! Check out our past workshops [here!](#)

UPCOMING:

PROJECT PA WEBINAR
DECEMBER 8, 2020

**SCHOOL NUTRITION INDUSTRY
CONFERENCE**
JANUARY 10-12, 2021

SNA LEGISLATIVE ACTION CONFERENCE
MARCH 7-9, 2021

ANNUAL NATIONAL CONFERENCE
JULY 11-13, 2021

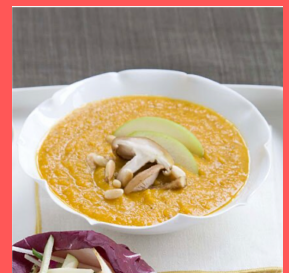
SNAPA STATE CONFERENCE
JULY 26-29, 2021

Warm Up This Winter

With this healthy soup recipe from SNA!

APPLE-BUTTERNUT SQUASH SOUP

CELEBRATE THE BEST OF FALL FLAVORS WITH THIS SOUP THAT PAIRS GRANNY SMITH APPLES WITH BUTTERNUT SQUASH. SERVE WITH CRUSTY FRENCH BREAD FOR A COMPLETE MEAL. [START COOKING NOW!](#)



THANK YOU SPONSORS!



USDA PUBLISHES PROPOSED RULE MAINTAINING SCHOOL MEAL FLEXIBILITIES

The USDA is publishing a proposed rule that will allow for flexibility in meal requirements within the USDA child nutrition program. This rule addresses milk, grains, and sodium meal requirements. Learn more about this rule and its implications [here](#).

According to the USDA, this rule will be published in "the Federal Register on November 25th, followed by a 30-day public comment period." The USDA welcomes comments and suggestions through [regulations.gov](#).

KALAHARI BONUS GIFT CARDS

We understand that organizations are unable to have holiday parties this year so why not give the gift of Kalahari?

- Spend \$250 and receive an extra \$25!
- Spend \$500 and receive an extra \$50!
- Spend \$1,000 and receive an extra \$200!
- Spend \$2,000 and receive an extra \$400!
- Spend \$2,500 and receive an extra \$500!

[Click here to purchase a gift card.](#)

Don't forget about their discounted rooms promotion that they are offering exclusively to industry [friends and their guests!](#)



USDA ANNOUNCES \$10 MILLION IN FARM TO SCHOOL GRANTS

USDA's Food and Nutrition Service (FNS) will seek to award \$10 million in Farm to School Grants in 2021. Each grant helps farm to school programs that increase access to local food in eligible schools and connect children with agriculture. Applications are due January 8, 2020

[Click here to apply!](#)

SNF EQUIPMENT GRANTS DUE JANUARY 31!

Click [here](#) for more information and to apply!

IN THE NEWS

[Pa.'s unspent stimulus cash will pad out \\$35B budget](#)

[Online or in school? Districts weigh options before telling Pa. their plans under new COVID-19 rule](#)

[General Assembly sends Wolf \\$11 billion budget](#)

[Senate Majority Leader Mitch McConnell introduces S. 4775, the Delivering Immediate Relief to American's Families, Schools and Small Businesses Act.](#)